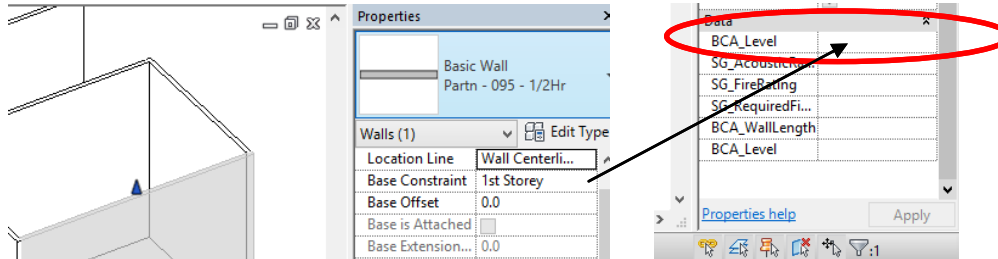


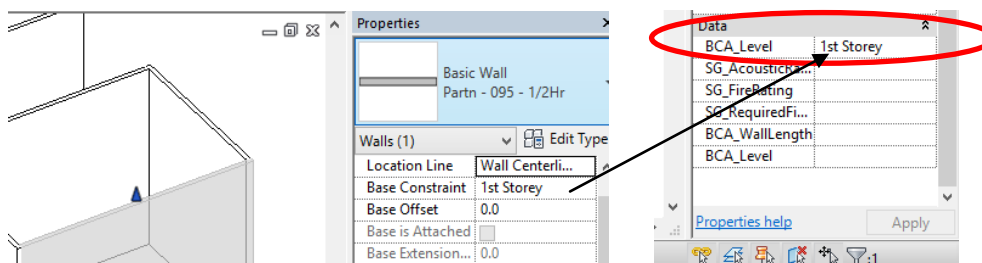
BScore Add- In

The purpose of this Add-In is to help user transfer the information of Wall **Base Constraint** into **BCA_Level** automatically.

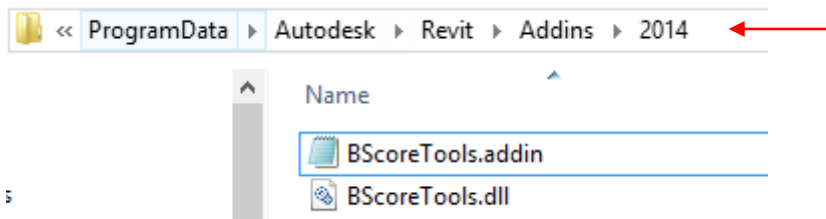
Before using the Add-In:



After using the Add- In:

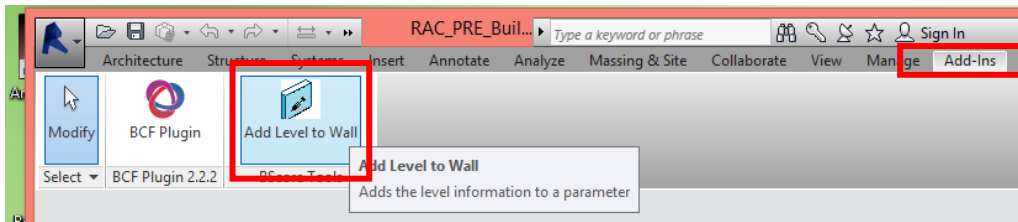


- Download the Add-In (**BScoreTools.zip**)
- Unzip the *BScoreTools* folder
- Move the (2) files in this location:



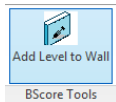
Step By Step Guide

The **Add Level to Wall** add-in will be under Adds- In Tab|BScore Tools Panel in the Revit UI.

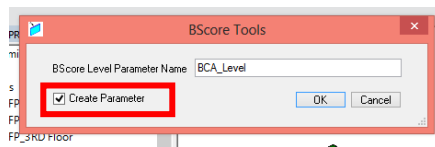


Step on using Add Level to Wall tool:

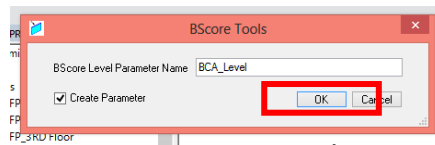
1. Click



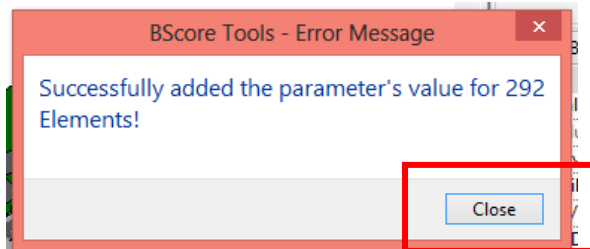
2. BScore window will pop-up. Check "Create Parameter" only if *BCA_Level* parameter is not yet created in your project.



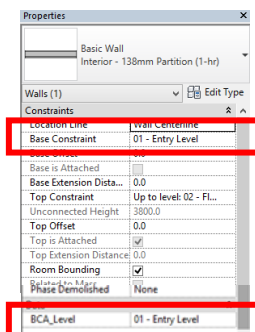
3. Click "OK".



4. BScore Tools window will pop- up an error message. Click "Close".



5. In the wall properties palette, The value on "Base Constraint" will be automatically copied to "BCA_Level" (Note: Once placed, value of *BCA_Level* can still change)



Things to note:

BScore tools have the following limitations. Workaround should be performed to be able for the tool to work as desired.

Model Group

- Group name will be renamed into "Group 1", "Group 2", "Group 3"
- Only worked in 1 group instance of the same group name.

Workaround: *Rename* the "Group 1", "Group 2", "Group 3" to a desired group name. *Select all instances* of unchanged group and *Change* the Group type from the Properties Type Selector.

Link File

- Not working on link files

Workaround: *Open* the link file and *Use* the tool from there.